

Healthy Communities

Andrew Clark, Nick Emmel & Amanda Jackson

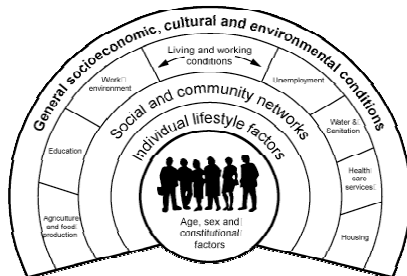


UNIVERSITY OF LEEDS

Healthy Universities Leeds 2007

Healthy Communities

- What is a Healthy Community?
- What are the key factors in the development of a Healthy Community?
- What part can universities, colleges and students play in developing a Healthy Community?



Healthy Universities Leeds 2007

Workshop Outline

- Experiences from an ongoing research project
 - A brief overview of the research and the research site
 - Non-student residents' perceptions of students
 - Students' perceptions of locality
 - Thinking beyond the community/student binary
- The University of Leeds Perspective
 - Strategy
 - Responsive to changing priorities
 - Active participation

Experiences from an Ongoing Research Project

(www.reallifemethods.ac.uk/connected)

- Exploring networks, neighbourhoods and communities
- Inner North-West Leeds
- Heterogeneous 'local' population:
 - 44.4% aged 20-29
 - 24.66% BME groups
 - 8.0% Muslim
 - 33.8% households in receipt of benefits
 - c. 58.6% of total population in FT education

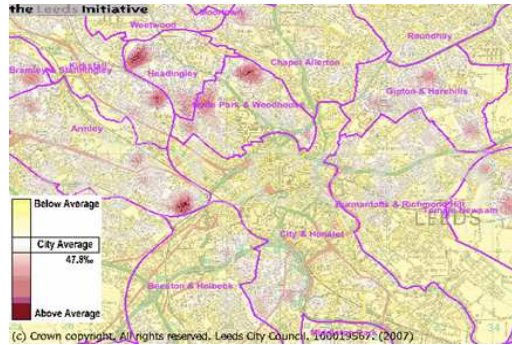
Non-student residents perceptions of student residents

■ Key issues:

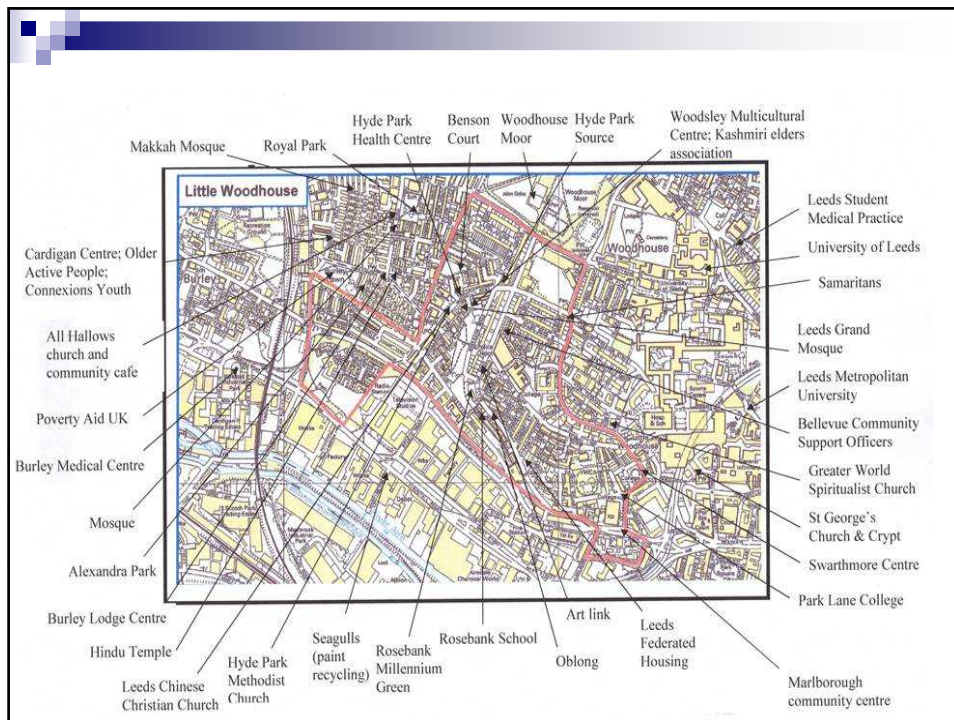
- Housing
- Rubbish
- Noise etc.
- Crime
- Environment

■ However...

- Few non-student residents 'blame' students directly for issues in the area
- General widespread recognition of local benefits of student population



Healthy Universities Leeds 2007



Students' Perceptions of Locality

- Tend to lead localised but not local lives
- Rely on rather closed, but dispersed and locally limited networks for support
- Have a relatively strong sense of location; but this is temporally contingent
- Are not naive about issues in the area; but have limited understanding of the everyday lives of some local non-student populations

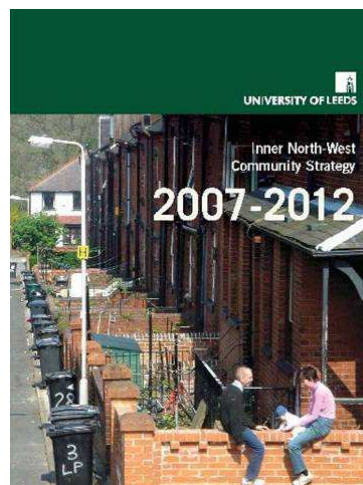
Healthy Universities Leeds 2007

Thinking Beyond the Community/Student Binary

- A language of community/student binaries is not necessarily helpful... but this does not mean issues around 'community' should be dismissed as misunderstood or spurious
- Students seen as scapegoats for local frustrations about (and perceptions of) wider demographic social, economic, environmental and institutional issues
- For those 'local' to our study site, their 'community' stops at the boundaries of the university
- For more information see www.reallife.ac.uk/connected

Community Strategy

- Community Strategy 2000
 - Appointment of Community Relations Officer
 - Introduction of Neighbourhood Helpline
- Inner North-West Community Strategy 2007-2012
 - Communication
 - Cohesive communities
 - Matching resources to needs



Responsive to Changing Priorities

- Representation
- Community and Housing Forum
- Community and Housing Steering Group
- Councillors
- Electronic communication



Healthy Universities Leeds 2007

Encouraging active participation

- Volunteering
- Community Engagement
- Active Citizenship
- Community involvement



Healthy Universities Leeds 2007

Minimising and Improving Environment Impact

- Student Changeover
- UYS
- Travel and Parking
- Community Guide



Healthy Universities Leeds 2007

Reducing Crime and Anti-Social Behaviour

- Universities Crime Reduction Partnership
 - Walksafe
 - Campuswatch
 - Unified campaign
- Neighbourhood Helpline

NEIGHBOURHOOD
HELPLINE

24 hour voicemail service:

0113 343 1064

neighbourhood.helpline@leeds.ac.uk

For more information about the service go to: www.leeds.ac.uk/nhelpline



Healthy Universities Leeds 2007

Housing

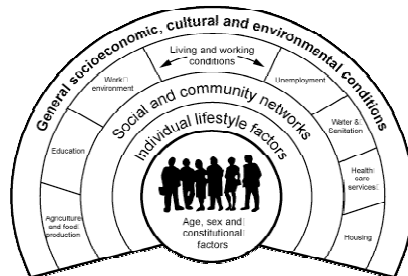
- University of Leeds Housing Strategy
- Shared Housing Action Plan
- Area of Housing Mix (AHM)
- Houses in Multiple Occupation (HMO) and the Use Classes Order (UCO)



Healthy Universities Leeds 2007

Healthy Communities

- What is a Healthy Community?
- What are the key factors in the development of a Healthy Community?
- What part can universities, colleges and students play in developing a Healthy Community?



Healthy Universities Leeds 2007