

Real Life Methods

A node of the ESRC National Centre for Research Methods

Enquiries and Manchester site:

Sociology
Roscoe Building
School of Social Sciences
Manchester M13 9PL
+44 (0)161 275 0265
reallifemethods@manchester.ac.uk

Leeds site:

Leeds Social Sciences Institute
Beech Grove House
University of Leeds
Leeds LS2 9JT
+44 (0)113 343 7332

www.reallifemethods.ac.uk

An Overview of Hyde Park / Burley Road, Leeds

Andrew Clark

April 2007

(Appendix 1 updated December 2007)

A Work in Progress

Contact: a.j.clark@leeds.ac.uk

0113 343 7338

An Overview of Hyde Park / Burley Road, Leeds

Introduction

This document presents an overview of the Hyde Park / Burley Road area of Leeds. It consists of five sections:

1. An outline of the different ‘representational spaces’ the field site falls within.
2. A description of the economic and social geographies of the field site based on readily accessible public datasets.
3. Brief comments on some issues that may pose particular challenges to the area covered by the field site.
4. An Appendix listing ‘community’ orientated venues, facilities and voluntary organisations that operate within and close to the field site.
5. An overview of Dan Vickers’ Output area classification for northwest Leeds (included as Appendix).

This document is updated regularly. Feedback, information on inaccuracies, or additional data is always appreciated. Please contact me at a.j.clark@leeds.ac.uk, or at the Leeds Social Sciences Institute, The University of Leeds, Leeds, LS2 9JT.

About the Connected Lives Strand of the NCRM Real Life Methods Node

This document provides a context for the Connected Lives strand of the Real Life Methods Node of the NCRM. This is a research project based at the University of Leeds about communities and the social support they can offer members. It aims to understand more about the ways in which community networks are used and how they are built and maintained, particularly with increased mobility and the introduction of communication technologies.

The research aims to understand communities through an exploration of the interactions of social networks in the Hyde Park / Burley Road area of Leeds. It is exploring how different social groups (according, for example social class, gender, ethnicity) construct networks of friends, relatives, neighbours and service providers, and how these networks are maintained over time and across space.

A geographic area with a heterogeneous population was purposely selected in which to understand the social networks people use to maintain their wellbeing. The research aims to interrogate how and why the social networks discovered are perceived to be important to these groups, and are keen to understand the interaction between travel, communication technologies, and transport service provision and the creation and maintenance of these networks.

The research is methodologically innovative. It is qualitatively driven and includes the extensive use of visual methods. It will also blend quantitative approaches to explore the dissonance between the perceived communities of different social groups and the definitions of community used in policy making and academic discourses. The research will add to our understanding of the networks that constitute communities. It will contribute to ways of representing and understanding the connected, fluid, mobile and relational nature of these networks and will add to our understanding of the importance of networks in promoting people's wellbeing. It will also report on the opportunities and limitation of the multi-disciplinary methods used in understanding community networks.

Funding

This is one of four projects funded under the joint University of Leeds / University of Manchester *Real Life Methods Node* of the ESRC National Centre for Research Methods. The Node advances qualitatively-driven, creatively blended, mixed-method approaches to understanding real lives.

A comment on method

Data presented here was predominantly gathered from internet sources with some additional input from published and unpublished manuscripts and reports. All internet sites were last accessed in spring 2007. The main websites used are the 'Leeds-Statistics' site (accessed from the 'Leeds Initiative' website) and the 'National Statistics' (UK census) sites. The document does not make use of data that is not so openly accessible, such as Social Services data, or surveys conducted by local voluntary or public sector groups. This is an additional layer of data that should be collected during the course of the field work. It is not something, however, that is necessarily readily available in the public domain.

The selection of datasets and statistics to represent the field site is a political act, ultimately responsible for producing a particular view of the historical processes that converge to produce the area today. There will inevitably be some data that is missing here that should be added. Likewise, more detailed data may be required on particular aspects; or other data may need to be combined to present a more detailed picture. Manipulation of the 2001 census data means a much more detailed contextual representation can be provided, but this takes time to assemble. It also produces a considerable amount of new data tables which ultimately may or may not be relevant. For the time being, this document presents an overview of the field site as a whole. It does not present any detailed exploration of particular conditions for subsections; either particular sets of streets (e.g. census output areas) or particular social groups (e.g. British Asians).

Layers of data

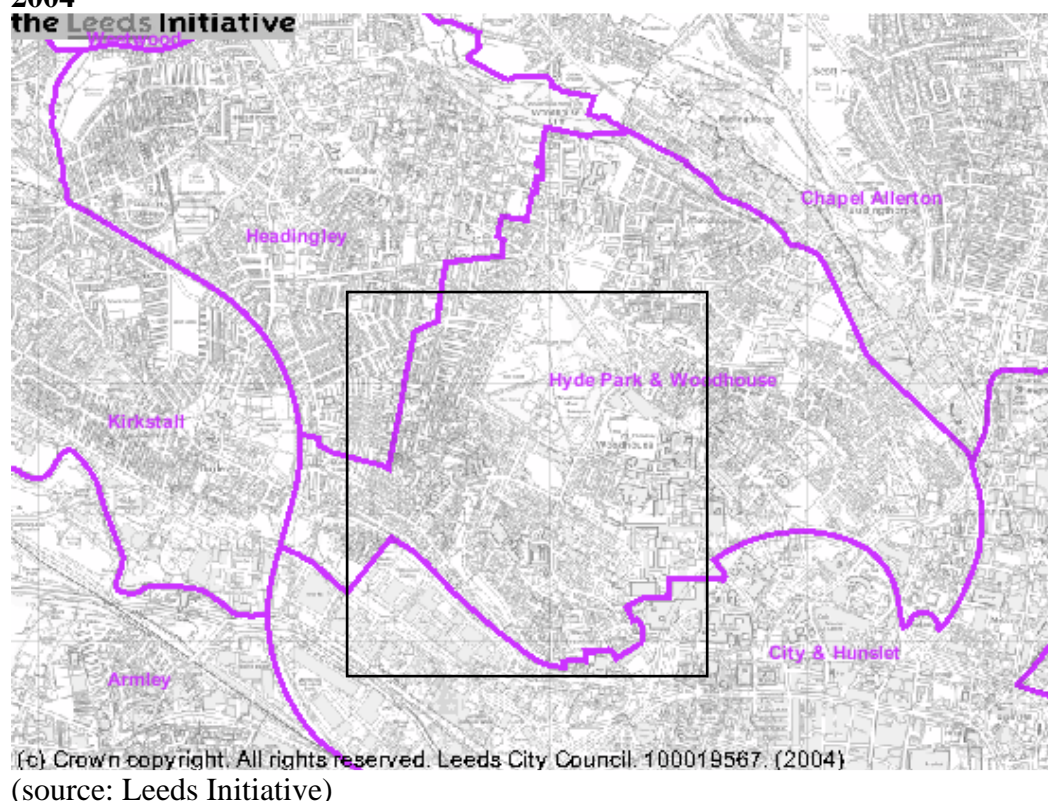
The quantitative data presented here is drawn from a variety of sources (e.g. Primary Care Trusts, Police, Census etc.). These sources do not use precisely the same geographical boundaries or scales for calculating data. Consequently, it is not always possible to compare across data-set at the scale presented here. Second, owing to issues of confidentiality, it may be difficult to obtain precise data at the street-level. Some additional data (such as educational attainment) is also not collected at such a small scale.

Of course, there is more to Hyde Park and Burley than the figures chosen to represent it by here. The field site will also be experienced through various spatial practises grounded in historical economic, social and political pasts which will have contributed to the construction of the figures and maps documented here. And the maps and figures presented do not document naturally occurring data, but rather stand in for other processes and experiences not explicitly documented; it is important to demonstrate reserve when making further assumptions about the everyday experiences of life here based predominantly on this data.

The field site in Leeds

The area selected as the main research base or field site is the Hyde Park and Burley area of Leeds; two adjacent inner city districts in northwest Leeds. The field site is situated in the Hyde Park and Woodhouse ward, though the southern most part of the Headingley ward also encroaches on the site in the northwest (Map 1). The Hyde Park and Woodhouse ward is a new electoral ward that came into existence in June 2004, following the conclusion of the boundary commission review. It should be noted that although some of the new wards share the same name as some of the wards that existed pre-June 2004, the boundaries are not the same. The 'Hyde Park and Woodhouse' ward was newly created from parts of three former wards (Kirstall, University and Headingley) in June 2004. Local councillors are: Penny Ewens (Liberal Democrat); Kabeer Hussain (Liberal Democrat); and Linda Rhodes-Clayton (Liberal Democrat). The site falls within the Leeds West parliamentary constituency and is currently represented by The Rt. Hon. John Battle (Labour). This boundary change is significant as some pre-prepared data sets from Leeds City Council are created on the pre-2004 ward geography. This makes direct comparison over time difficult; it also makes locational comparisons difficult. Older data (such as that presented in Lister *et al.*, 1994¹) is not presented here due to the age of this data, and also due to changes in ward boundaries.

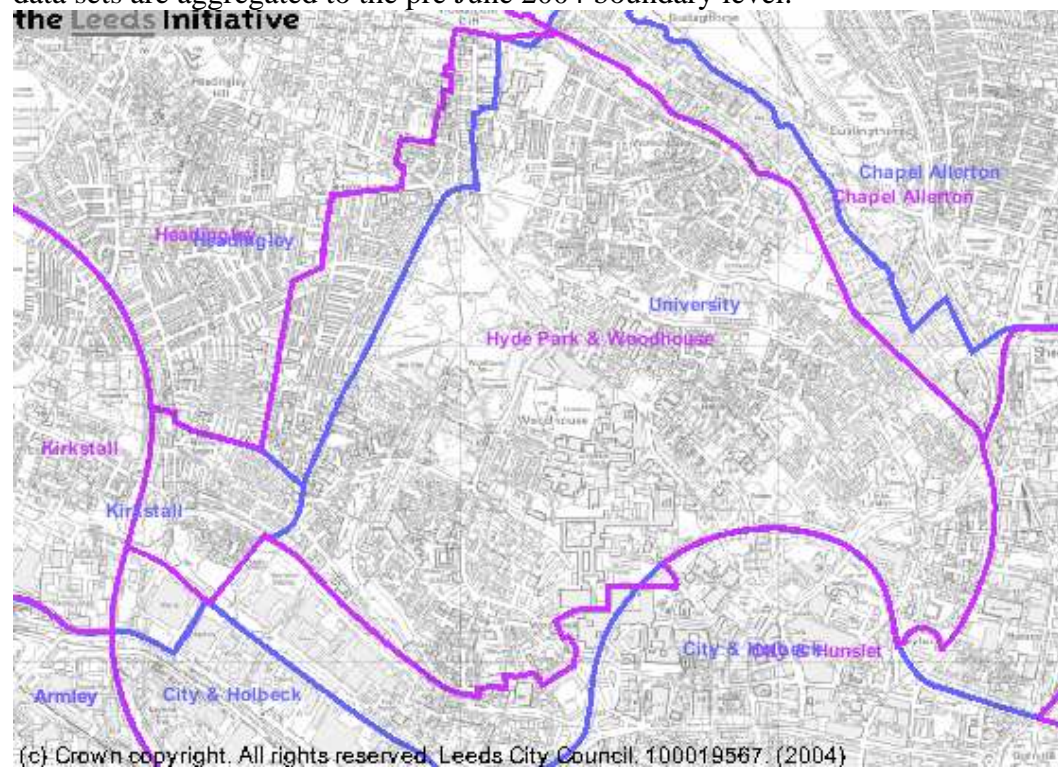
Map 1: Newly created electoral wards in northwest inner city Leeds post-June 2004



¹ Lister, H; Simpkin, M and Jones, M (1994): *Redressing the Balance: Health and Inequality in Leeds* (Leeds) Leeds Health for All.

Map 2: Pre- (blue line) and post- (purple line) June 2004 ward boundaries

The boundary change dramatically altered the field area with the creation of a new ward. This boundary change is significant as many pre-June 2004 publications and data sets are aggregated to the pre June 2004 boundary level.



Social and Physical description

The area of Hyde Park / Burley that forms the field site can be easily identified on local street maps. The area is bounded by a pentagon shaped road network with Victoria Road and Woodhouse Lane to the north, Cardigan Lane to the East, Burley Road to the south and Cardigan Road to the west. The University of Leeds occupies much of the eastern flank along Cardigan Road, and Hyde Park occupies much of the northern edge of the site along Woodhouse Lane. There are two significant areas of open green space: Hyde Park / Woodhouse Moor to the North and Burley Lawn to the south. The field site comprises two neighbourhoods; Hyde Park and Burley, though the boundaries around these two sites are far from fixed or clearly demarcated. The area is hilly, with quite steep slopes rising to a peak in the northwest on Woodhouse Moor to the west of the university campus and dropping away southwards towards the River Aire.

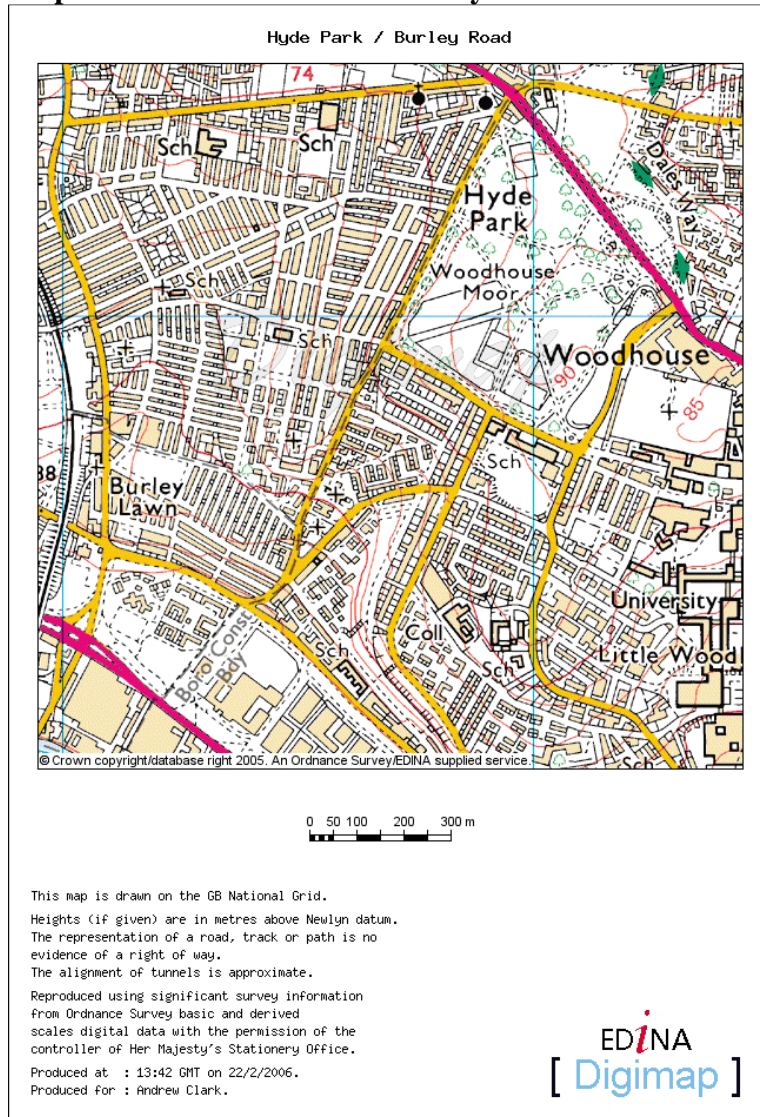
Photograph 1: Aerial view of field site
the Leeds Initiative



(c) Crown copyright. All rights reserved. Leeds City Council: 100019567. (2004)

(Source: Leeds Initiative)

Map 3: Field site as demarcated by road network

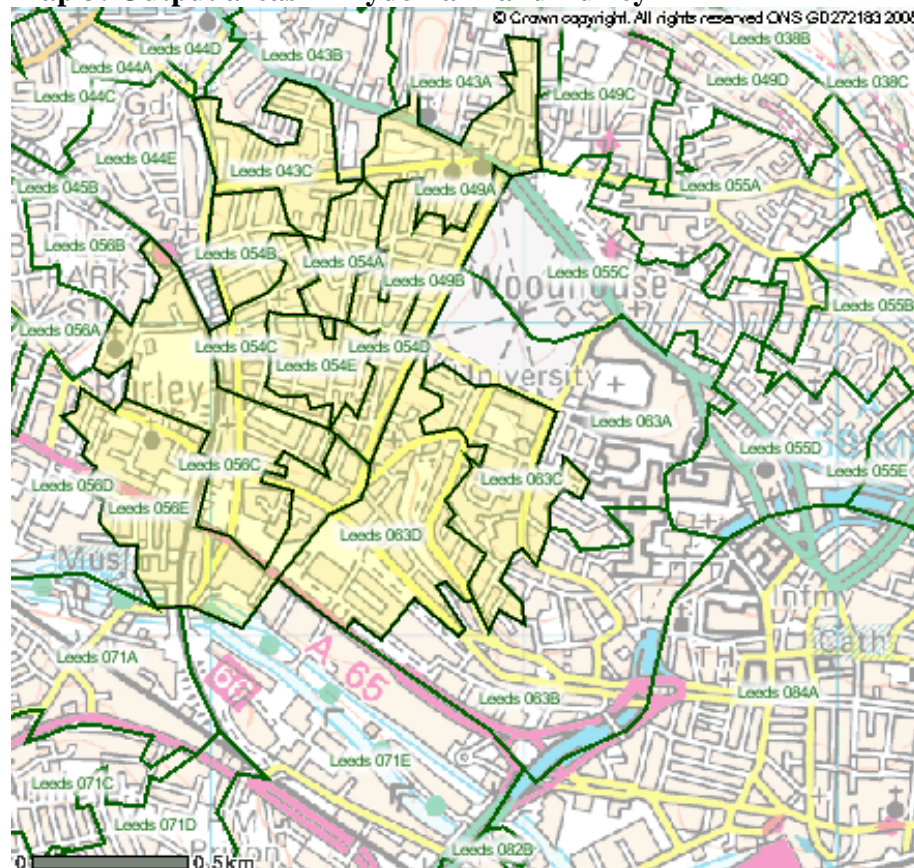


(source: Ordnance survey, created with Edina Digimap)

Census Output Areas

The 2001 census wards follow a different geography to the political wards in the area, and of course the road-defined boundary of the field site does not follow the census defined boundaries (though these boundaries are also constructed rather arbitrarily). The smallest level of data available in the 2001 census is the output area; a collection of geographically proximate output areas makes up a ward. It is at the ward level that most of the UK census data has been reproduced and made easily available for public consultation. However, it is possible to analyse census data at the more detailed output area level through the National Statistics website. The Output areas located in the field site are shown in Map 3. It is clear that these do not follow the road layout. I have not included the University precinct (Leeds063A) or Hyde Park (Leeds055C) output areas here as both would significantly distort any results obtained – the university due to the low population density, and Hyde Park because it includes much of the Woodhouse area which lies beyond the scope of the field site. This should be borne in mind when considering any census data for the area which will be classified under the title ‘Hyde Park and Woodhouse’ ward.

Map 3: Output areas in Hyde Park and Burley

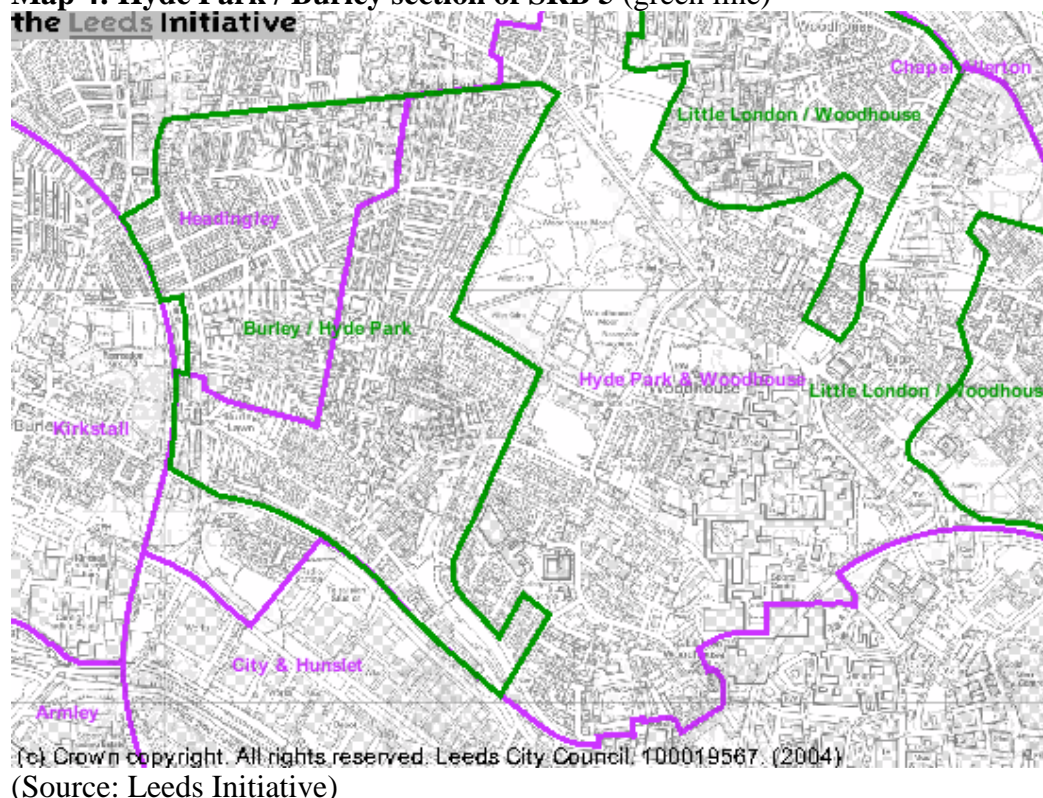


(Source: National Statistics Office)

Single Regeneration Budget (SRB)

A final boundary to consider is that of the Single Regeneration Budget area 5. The national Single Regeneration Budget initiative comprised a series of six bidding rounds, ending in 2000 and Leeds Council successfully obtained funding in each of these rounds. Each funding round lasts for seven years and has different objectives and target areas. Parts of Hyde Park and Burley Road fall within the remit of SRB Round 5, *Better Neighbourhoods and Confident Communities* which runs from 1999/2000 - 2005/2006. This programme targets neighbourhood decline in 18 of the most deprived areas of the City² and has received £24.864m of funding from the ODPM through the Leeds Initiative partnership. The scheme aims to address decline through selective use of SRB funding in specific neighbourhoods across the city, with a particular focus on improved community involvement. The scheme links housing based regeneration in the target areas with programmes to improve training/employment opportunities, raise educational attainment and skill levels, support competitiveness in existing businesses and new business start-up support. Funding ends in March, 2006.

Map 4: Hyde Park / Burley section of SRB 5 (green line)



SRB5 is particularly significant for the project because of its focus on community involvement. It is also of pragmatic relevance here because the boundaries of the Hyde Park and Burley section fall within the boundaries of the field site. Aside from the census, there has been a considerable amount of survey data collected for this area, not all of which appears to be readily available. More useful now, is the calculation of 2001 census data for the SRB5 districts. However, because the south-

² The other neighbourhoods targeted by SRB5 include the East Bank Regeneration Area, the urban renewal areas of Chapeltown/Harehills, and Beeston.

eastern most section of the field site falls outside the field site boundary, these figures alone cannot be used as an exact substitution for the field site as a whole.

Area Statistics: Hyde Park and Woodhouse (census ward, 2001) and Burley / Hyde Park (SRB area)

Demographic Profile

In 2001 22,240 people were registered as living in Hyde Park and Woodhouse (with 14,486 in Burley / Hyde Park SRB). By far the largest demographic group were aged 20-29, and most probably were students. In the SRB area, 20-29 years olds accounted for over 60% of the population, though it must be stated that not all these would be students. Children under 16 were under represented compared to Leeds as a whole, as were those over 60.

Although the ‘white British’ ethnic group dominate the area at around 75%, this is considerably less than the figures for the Leeds Metropolitan District as a whole (Table 2). The main black and minority ethnic (BME) groups were Pakistani, Indian, Black or black British and Chinese. The minority ethnic groups appear to be concentrated in particular parts of the field site. Consider, for example, the difference in the proportion of Chinese in the Hyde Park and Woodhouse ward (3.35%) compared to the proportion of Chinese in the Burley and Hyde Park sub-section of the ward (1.29%). More noticeable, is the high proportion of Asian or Asian British residing in the Hyde Park / Burley sub-section (c.15.62%) compared to the ward as a whole (10.13%) and Leeds as a whole (just 4.51%). Pakistanis are the largest single minority ethnic group. Also indicative of the social heterogeneity of the area is the relatively large, and spatially concentrated, Muslim population (12.4% in the SRB area; though only 8.78% across the ward as a whole). Also of note is the 2.88% Hindu population served by the Hindu temple in Alexandra Road in the south of the site. It can be noted that almost 33% of the population in the SRB area declare no religion; what this means (if anything) for the quality and strength of ‘community ties’ in the areas remains to be seen (c.f. Putnam, 2000³).

Table 1: Population breakdown

(Source: Leeds Statistics, based on Census of Population, 2001)

	Hyde Park and Woodhouse		Burley / Hyde Park SRB	Leeds Metropolitan District
Age group (years)	Total	Percentage	Percentage	Percentage
0-4	839	3.77	3.35	5.71
5-15	1821	8.19	6.4	14.29
16-19	2440	10.97	7.35	5.51
20-29	9866	44.36	60.91	15.23
30-59	5153	23.17	16.29	39.30
60 or over	2121	9.54	5.68	19.96
Total	22240		14486	

Table 2: Ethnicity breakdown

³ Putnam R (2001): *Bowling Alone: The Strange Disappearance of Civic America* (New York) Touchstone.

(Source: Leeds Statistics, based on Census of Population, 2001)

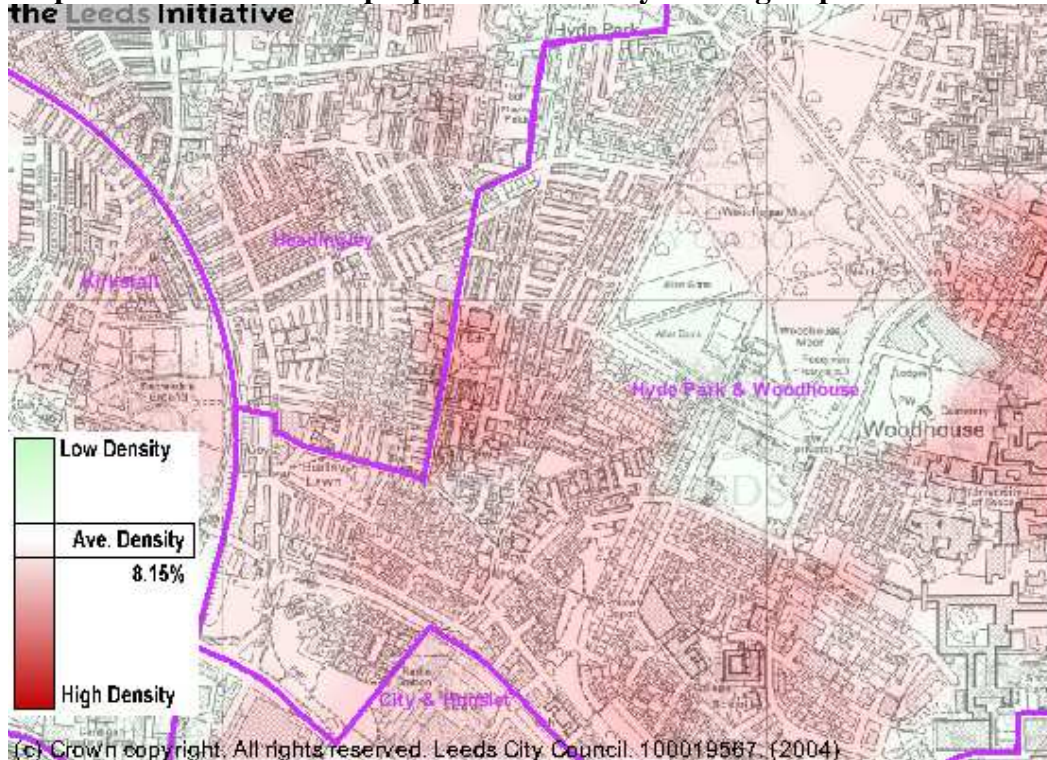
	Hyde Park and Woodhouse		Burley / Hyde Park SRB	Leeds Metropolitan District
Ethnicity	Total	Percentage	Percentage	Percentage
White	16750	75.34	76.32	91.84
Mixed	791	3.56	2.32	1.36
Chinese	745	3.35	1.29	0.48
Asian or Asian British	2252	10.13	c. 15.62	4.51
Of which...				
Indian	655	2.95	4.49	1.72
Pakistani	1248	5.61	10.73	2.11
Bangladeshi	70	0.31	0.39	0.35
Other Asian	279	1.25	N / A	0.33
Black or Black British	1249	5.62	2.6	1.44
Other Ethnicity	445	2.00	1.77	0.35

Table 3: Religion breakdown

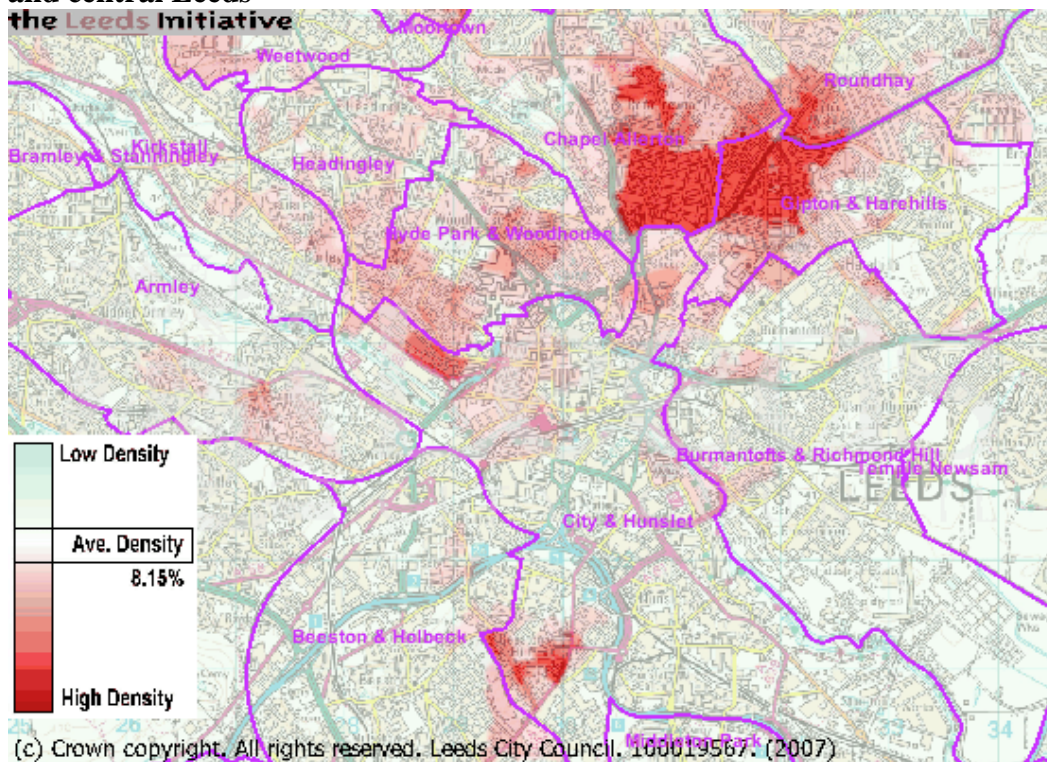
(Source: Leeds Statistics, based on Census of Population, 2001)

	Hyde Park and Woodhouse		Burley / Hyde Park SRB	Leeds Metropolitan District
Religion	Total	Percentage	Percentage	Percentage
Christian	10198	45.89	39.29	68.86
Buddhist	276	1.24	0.65	0.22
Hindu	333	1.50	2.18	0.58
Jewish	429	1.93	1.96	1.16
Muslim	1952	8.78	12.4	2.99
Sikh	196	0.88	1.84	1.06
Other Religion	124	0.56	0.62	0.21
No Religion	6330	28.49	32.73	16.79
Not Stated	2384	10.73	8.38	8.12

Map 5i: Concentration of people from minority ethnic groups
the Leeds Initiative



Map 5ii: Concentration of people from minority ethnic groups across inner city and central Leeds
the Leeds Initiative

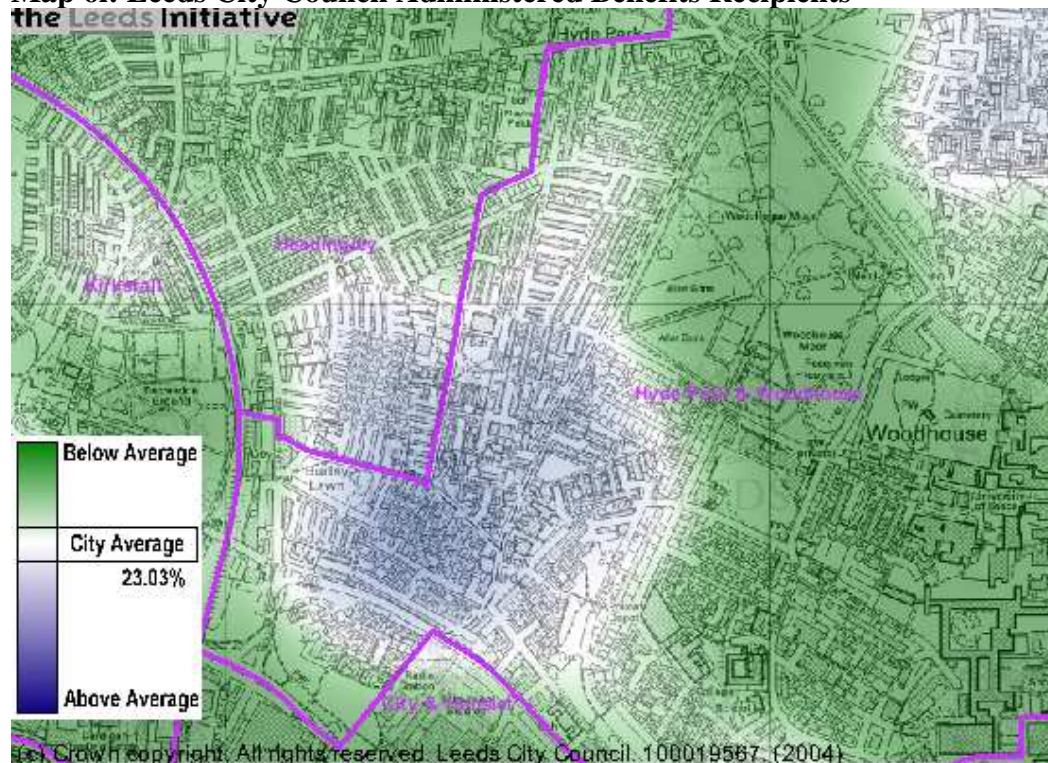


Economic profile

The economic profile of the field site cannot be easily defined. Parts of the area, particularly in the north, are relatively affluent (or more precisely, the student population has a relatively high-level of disposable income). To the south, the difference in wealth appears stark where the proportion of households receiving benefit, for example, reveals an alarming 'island' of households dependant on benefits (Map 6). If the proportion of households in receipt of a council administered benefit is a key proxy indicator of the extent of social exclusion and inequality, then it is clear that parts of Burley can be considered extremely deprived. Mapping benefit take-up for households with dependent children provides an extra dimension linking more closely as it does to issues of worklessness, child poverty and education. While there are also pockets of households in receipt of benefits in Woodhouse, which will inevitably affect the Census data presented here, benefit recipient households remain high in Hyde Park area (particularly so given the large number of student households would receive few benefits) with 19% of all adults and 43.12% of children under 15 are in households in receipt of benefits.

However, alongside the high numbers of benefit recipients, is the relatively low numbers of unemployed individuals in the SRB area (Table 4). Table 4 also confirms the significant size of the student population (7487 individuals, or 58.6% of the SRB area) across the area. There also appears to be a rather large proportion of those engaged in neither work nor study (9.25%) many of whom may be caring for others or registered as having a long term illness.

Map 6i: Leeds City Council Administered Benefits Recipients



Map 6ii: Leeds City Council Administered Benefits Recipients across inner city and central Leeds

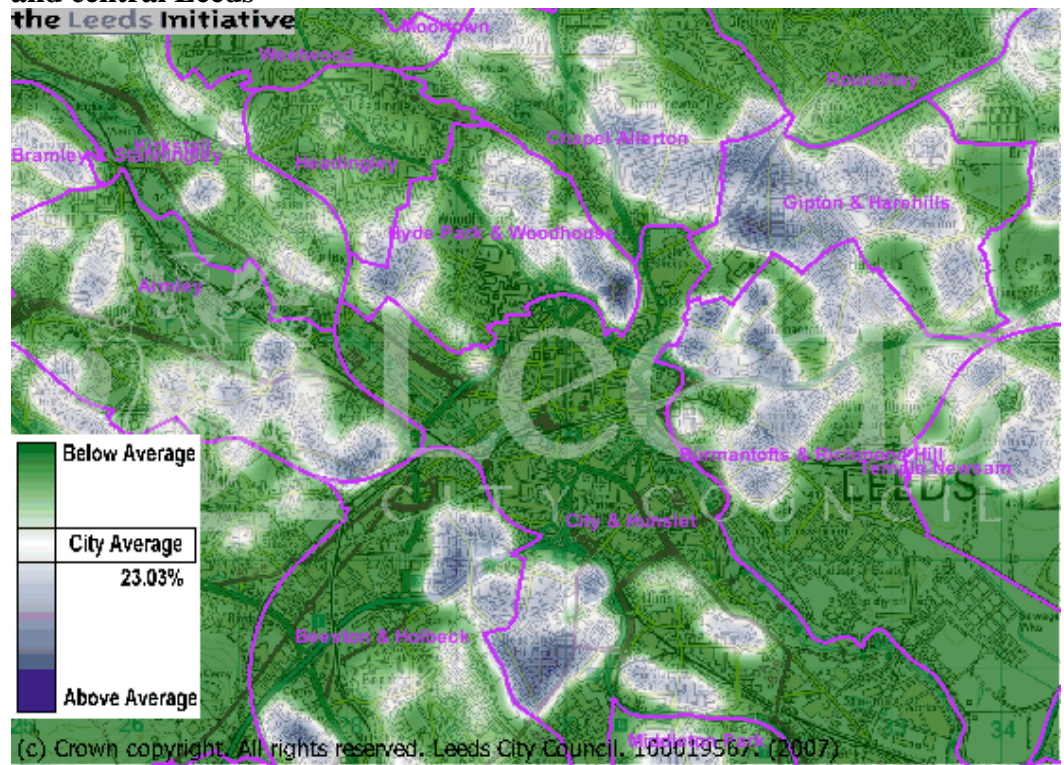


Table 4: Council administered benefits

(Source: Leeds Statistics, based on Leeds Benefits Service, Oct. 2003)

(Figures unavailable for Burley / Hyde Park SRB)

	Hyde Park and Woodhouse		Leeds Metropolitan District
	Total	Percentage	Percentage
All households	2745	33.80	23.02
Households w/ all residents over 60	798	9.83	10.92
Lone Parent Households	448	5.53	4.16
Children in households on benefit	1147	43.12	21.74
People in households on benefit	4225	19.00	15.75

Table 5: Employment: Burley / Hyde Park SRB only
(Source: Leeds Statistics, census of population 2001)

	Burley / Hyde Park SRB		Leeds Metropolitan District
	Total	Percentage	Percentage
All people aged 16 – 74	12773	100	100
Economically active	5649	44.22	65.84
Of which...			
Employees: full time	2536	19.85	40.44
Employees: part time	540	4.22	12.03
Self employed	271	2.12	6.45
Unemployed	433	3.38	3.32
Fulltime Student	1869	14.63	3.6
Economically inactive	7129	55.81	34.16
Of which...			
Economically inactive: retired	329	2.57	13.21
Economically inactive: students	5618	43.98	7.07
Economically inactive: other	1182	9.25	13.88

The Student Population⁴

EU and Other Overseas students 2005/06: Disability

Disability	RP	TP	UG
No Known Disability	888	1491	1559
Dyslexia	1	2	11
Blind/Partially Sighted		3	7
Deaf/Hearing Impairment	1	1	2
Wheelchair User/Mobility Difficulties		2	1
Mental Health Difficulties		3	1
An Unseen Disability	5	15	17
Multiple Disability	2	5	1
Other Disability	1	3	4
Unknown	22	4	unknown

⁴ Information on University of Leeds student demographics provided by Leeds University Student Union.

Student population by gender (University of Leeds)

	RP		TP		UG		TOTAL	
	No.	%	No.	%	No.	%	No.	%
Female	839	45.5	2,551	58.4	13,724	57.9	17,114	57.2
Male	1,005	54.5	1,814	41.6	9,970	42.1	12,789	42.8
Total Known Data	1,844		4,365		23,694		29,903	
Gender is Unknown	1		0		0		1	
Total Students	1,845		4,365		23,694		29,904	

RP – Research Postgraduate; TP – Taught Postgraduate; UG - Undergraduate

Student population by ethnicity (Uni of Leeds), Home students only 2005/2006

	RP		TP		UG		All	
	No.	%	No.	%	No.	%	No.	%
White (old code)*	11	1.1	8	0.3	10	0	29	0.1
White - British (new code)*	861	82.6	2,291	85.3	18,976	87.5	22,128	87.1
White - Irish (new code)*	17	1.6	22	0.8	147	0.7	186	0.7
White - Scottish (new code)	20	1.9	45	1.7	131	0.6	196	0.8
Irish Traveller	0	0	0	0	3	0	3	0
Other White background (new code)*	27	2.6	49	1.8	273	1.3	349	1.4
Black or Black British - Caribbean	3	0.3	16	0.6	96	0.4	115	0.5
Black or Black British - African	11	1.1	21	0.8	159	0.7	191	0.8
Other Black background	0	0	1	0	18	0.1	19	0.1
Asian or Asian British - Indian	28	2.7	71	2.6	492	2.3	591	2.3
Asian or Asian British - Pakistani	14	1.3	52	1.9	329	1.5	395	1.6
Asian or Asian British - Bangladeshi	5	0.5	10	0.4	49	0.2	64	0.3
Chinese or Other Ethnic Background - Chinese	14	1.3	15	0.6	150	0.7	179	0.7
Other Asian background	10	1	15	0.6	157	0.7	182	0.7
Mixed – White and Black Caribbean**	3	0.3	3	0.1	98	0.5	104	0.4
Mixed – White and Black African**	2	0.2	7	0.3	44	0.2	53	0.2
Mixed – White and Asian**	9	0.9	15	0.6	243	1.1	267	1.1
Other Mixed background**	4	0.4	28	1	202	0.9	234	0.9
Other Ethnic background**	3	0.3	17	0.6	103	0.5	123	0.5
Total Known Data	1,042		2,686		21,680		25,408	
Ethnicity Status is Unknown	49		143		401		593	
Total Students	1,091		2,829		22,081		26,001	

RP – Research Postgraduate; TP – Taught Postgraduate; UG - Undergraduate

NB. The coding of students' Ethnicities changed in 2002/03 to reflect the new 2001 census classifications.

* The old classification of "White" has now been replaced by White British, White Irish, White Scottish, Irish Traveller and Other White. However at the present time a small number of students remain classified under the old catch-all "White" code.

** Prior to 2001/02 these students were included together in the old "Other" category.

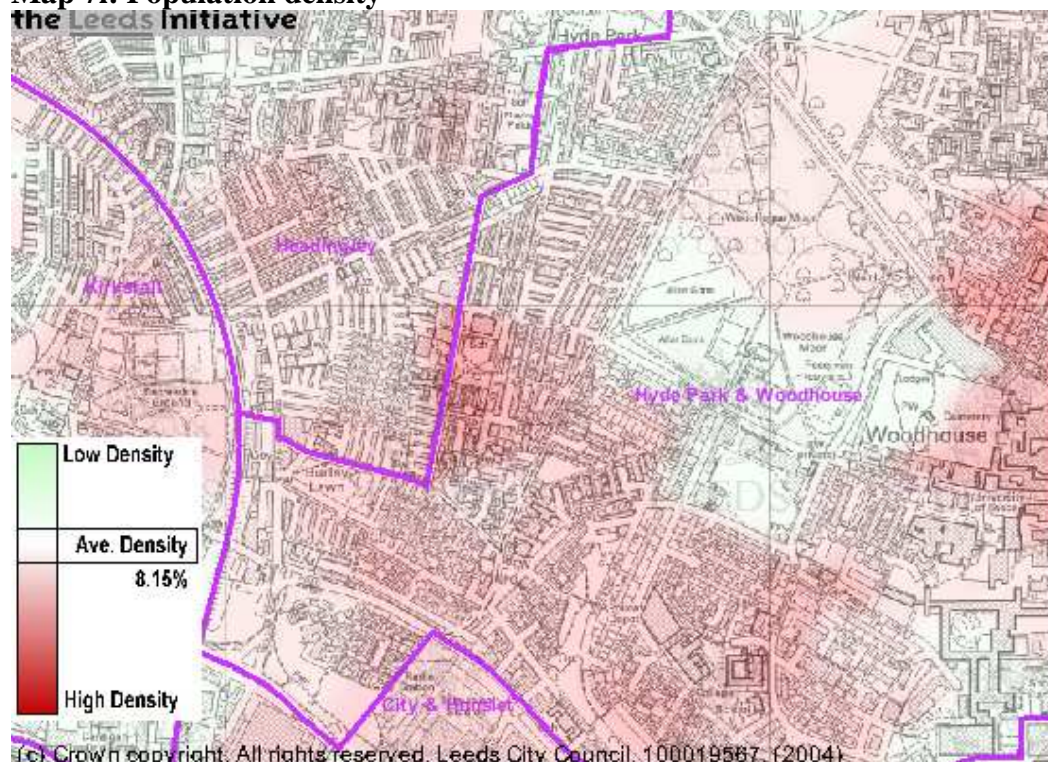
Household Composition

The Hyde Park and Burley area is an area of tightly packed, high density back to back and terraced housing that was constructed predominantly in the later 19th century (photograph 1). The high density population highlighted in Map 7 hints at the area's working class past. The Victorian terraces of many inner city areas such as these have often been romanticised as remnants of 'communities lost', for example following slum redevelopment in the 1950s. In Burley and Hyde Park, while many of the terraces were not demolished during this period, many of them no longer house their original populations; the working class communities of the past are certainly no longer exist in this area today (though did they ever?).

Table 6 confirms the dominance of student occupied households in the Hyde Park / Burley area. Over 80% of the population are single, and over 45% of households are registered as 'other' (that is, predominantly multiple student occupancy). The predominance of high occupancy non-family households comprised of young single people may give rise to a very specific form of 'community' that may differ substantially from more conventional household types.

Finally, given the significance of car ownership as an indication of poverty levels, but also its importance for the formulation of networks, Table 8 details car ownership levels in the area. However, while some 52.39% of individuals do not own a car, this does not mean they do not have access to one; these figures can provide no indication of how the relatively few numbers of cars are actually used by the community. The low rates of car ownership is also reflected in the mode of travel to work (Table 9) where contrary to the Leeds average, bicycle, foot, or public transport are the most common forms of travel. This also reflects the close proximity of major places of work (including Leeds General Infirmary, the universities, and the city centre).

**Map 7i: Population density
the Leeds Initiative**



Map 7ii: Population density across inner city and central Leeds

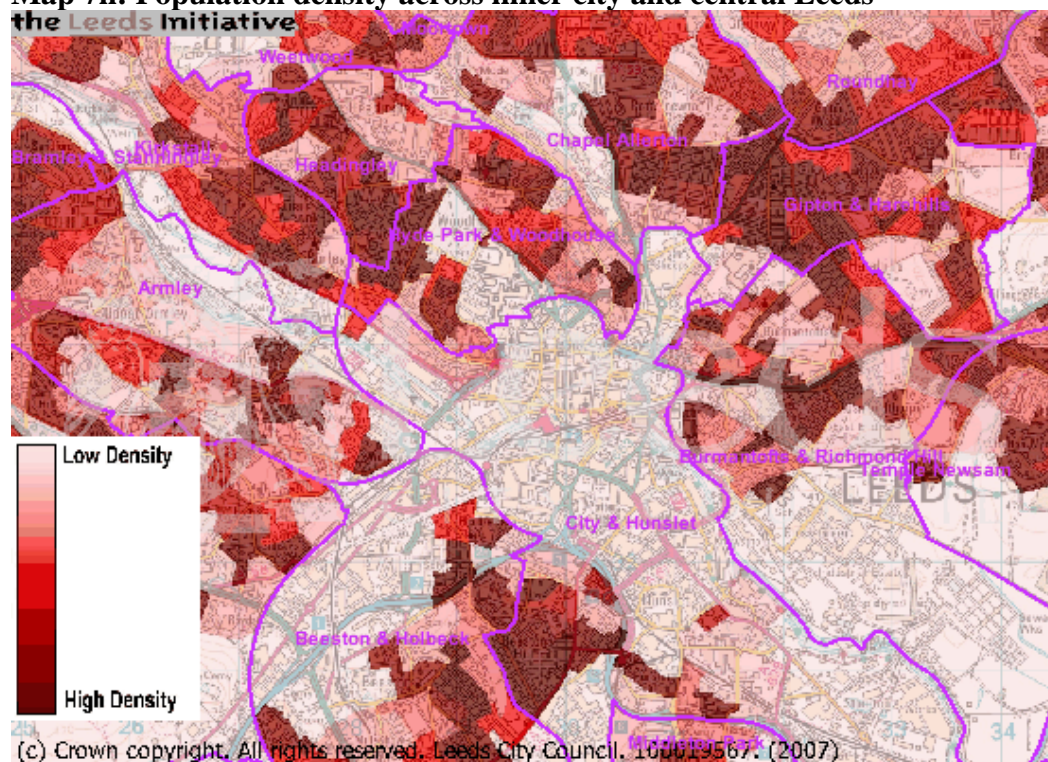


Table 6: Household Profile Burley / Hyde Park SRB

(Source: Leeds Statistics, census of population 2001)

	Burley / Hyde Park SRB		Leeds Metropolitan District
	Total	Percentage	Percentage
People aged 16 or over...	12969	100	100
Living in a couple	2462	18.98	57.36
Not living in a couple	10507	81.01	42.63
Marital status...			
Single	10544	80.74	34.10
Married	1671	12.79	47.13
Divorced / widowed / separated	842	6.44	18.78
One person households	1482	29.7	31.65
Married and co-habiting couples	905	18.13	42.37
Lone parents	319	6.39	9.82
Other households	2285	45.8	16.16

Table 7: Housing Tenure

(Source: Leeds Statistics, census of population 2001)

	Burley / Hyde Park SRB		Leeds Metropolitan District
	Total	Percentage	Percentage
Owner occupied	968	19.41	62.22
Council rented	582	11.67	20.91
SLR	486	9.74	4.31
Private rented	2950	59.16	12.57

Table 8: Car Ownership: Burley / Hyde Park SRB

(Source: Leeds Statistics, census of population 2001)

	Burley / Hyde Park SRB		Leeds Metropolitan District
	Total	Percentage	Percentage
None	2614	52.39	34.48
One	1640	32.87	42.00
Two or more	722	14.47	23.53

Table 9: Mode of travel to work: Burley / Hyde Park SRB

(All people aged 16-74 in employment)

(Source: Leeds City Council, census of population 2001)

	Burley / Hyde Park SRB		Leeds Metropolitan District
	Total	Percentage	Percentage
Work mainly from home	208	4.21	7.43
Public transport	1512	30.61	18.82
Car / van / motorcycle	1289	26.09	53.77
Passenger in car / van / motorcycle	241	4.87	7.19
Taxi	59	1.19	0.72
Bicycle or foot	1608	32.55	11.78
Other	22	0.44	0.29

Department of Transport Core Accessibility Indicators⁵

The figures below show the DfT core accessibility indicators for residents of Leeds District. Accessibility is measured to the nearest service.

Access to further education

- 85.4% and 99.9% of 16 -19 year olds are within 30 and 60 minutes of a further education establishment by public transport.

Access to work

- 98.9% and 99.9% of people of working age are within 20 and 40 minutes of an employment centre by public transport.
- 99.6% and 99.9% of people in receipt of Jobseekers allowance are within 20 and 40 minutes of an employment centre by public transport.

Access to hospitals

- 87.1 % and 99.9% of all households are within 30 and 60 minutes of a hospital by public transport.
- 92.2% and 99.9% of households without a car are within 30 and 60 minutes of a hospital by public transport.

Access to GPs

- 97.6% and 99.8% of all households are within 15 and 30 minutes of a GP by public transport.
- 99.1 % and 99.9% of households without a car are within 15 and 30 minutes of a GP by public transport.

Access to primary schools

- 99.5% and 99.9% of all 5 - 11 year olds are within 15 and 30 minutes of the nearest primary school by public transport.

Access to secondary schools

- 95.9% and 99.8% of all 12 - 17 year olds are within 20 and 40 minutes of the nearest secondary school by public transport.

The figures below show the DfT core accessibility indicators for residents of the Burley study area.

Access to further education

- 100.0% of 16 - 19 year olds are within 30 minutes of a further education establishment by public transport.

Access to work

- 100.0% of people of working age are within 20 minutes of an employment centre by public transport.
- 100.0% of people in receipt of Jobseekers allowance are within 20 minutes of an employment centre by public transport.

Access to hospitals

- 100.0% of all households are within 30 minutes of a hospital by public transport.

⁵ Calculations were performed in Accession 1.2.1 using public transport data for bus and rail obtained from the website hosted by Thales on behalf of the DfT. The public transport data is for autumn 2004. Household and population data is from the 2001 Census. Data on people in receipt of jobseekers allowance was supplied by the DfT. The DfT have defined employment centres as Super Output Areas with more than 499 jobs.

- 100.0% of households without a car are within 30 minutes of a hospital by public transport.

Access to GPs

- 100.0% of all households are within 15 minutes of a GP by public transport.
- 100.0% of households without a car are within 15 minutes of a GP by public transport.

Access to primary schools

- 100.0% of all 5 - 11 year olds are within 15 minutes of the nearest primary school by public transport.

Access to secondary schools

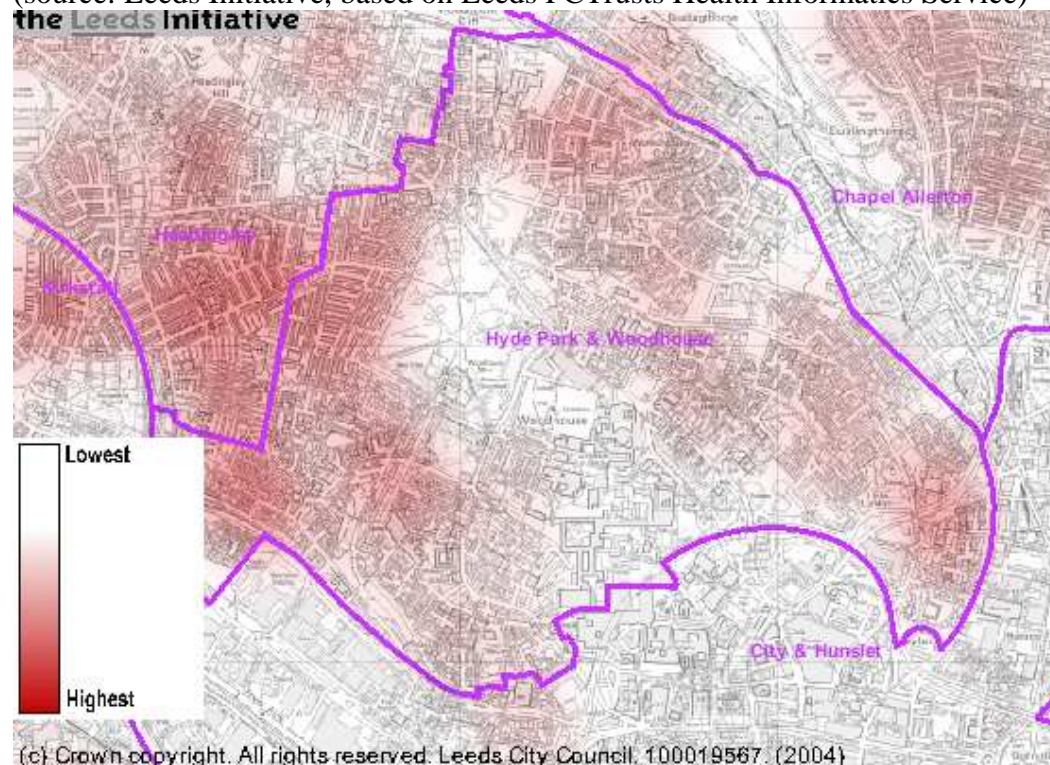
- 100.0% of all 12 - 17 year olds are within 20 minutes of the nearest secondary school by public transport.

Health Concerns⁶

Health status is often used as a proxy for poverty and exclusion. However, health is also influenced by age. As a whole, and on the measure shown here, the Hyde Park / Burley area is not an ‘unhealthy area’. In part this may be due to the more affluent student population. However, it may also be due to map being calculated on coronary heart disease mortality rates for those under 75; a disease that only affects poorer individuals more, but also becomes more prominent with age.

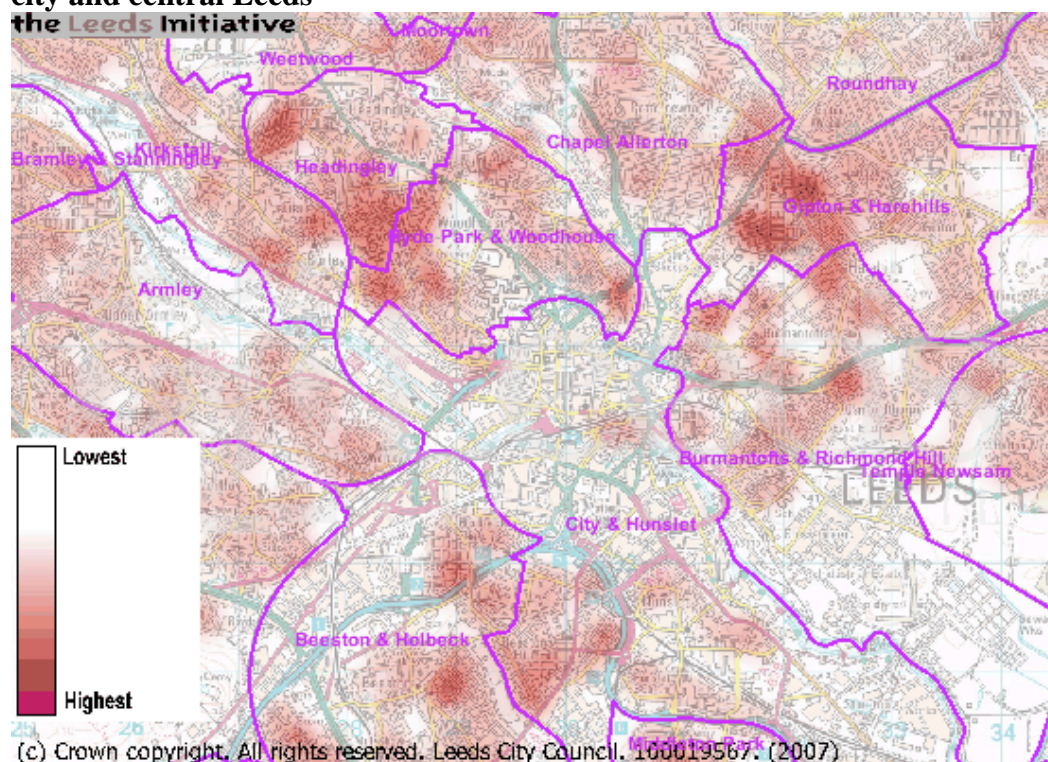
Map 8i: Coronary Heart Disease Mortality Rates (people under 75)

(source: Leeds Initiative, based on Leeds PCTrusts Health Informatics Service)



⁶ Data for health and illness is currently not in a particularly accessible form, and as stated in the introduction, existing sources of health data (such as Lister et al., 1994) are now quite old and presented according to different ward boundaries. More data on this subject will need to be collected from alternate sources.

Map 8ii: Coronary Heart Disease Mortality Rates (people under 75) across inner city and central Leeds



Crime Rates

Hyde Park and Burley fall within the LS6 postcode zone; an area that reputedly has one of the highest burglary and / or car crime rates in Britain. Certainly crime rates are high, though calculating these rates is notoriously difficult. However, Map 9 suggests this image is not wholly accurate. Crime rates tend to be higher in those areas frequented by students, and particularly revealing is the relatively lower rates in the poorest areas of the field site as represented by benefit recipients in Map 6.

Table 19: Recorded Crime

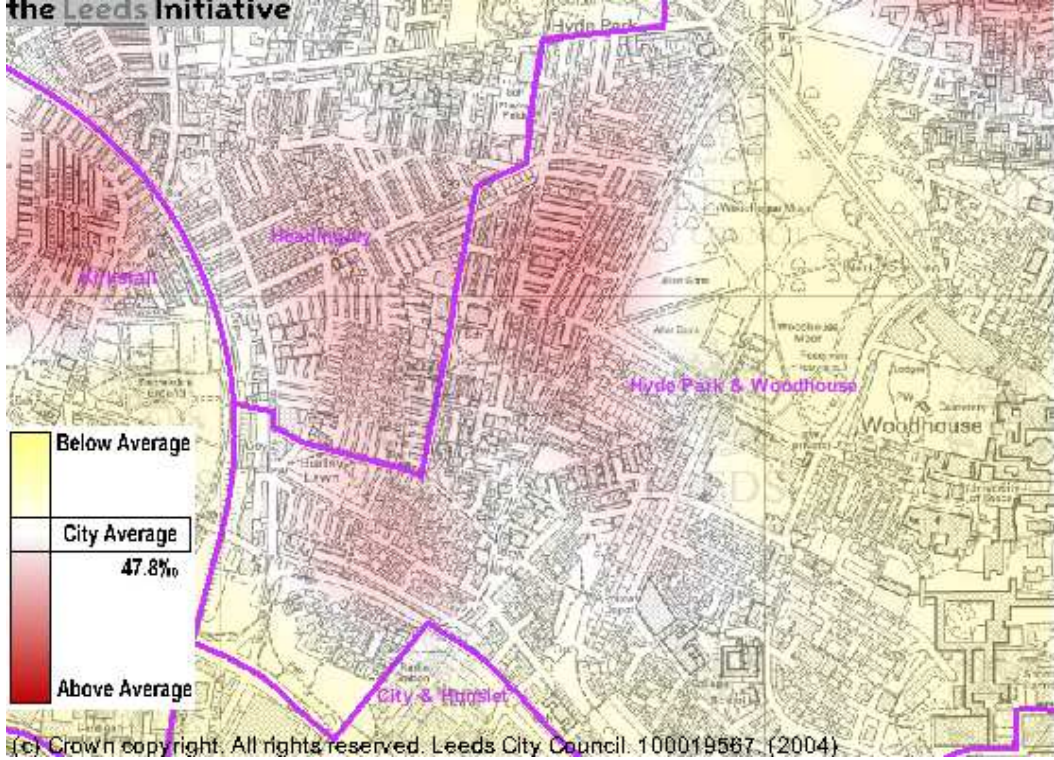
(Source: Leeds Statistics, West Yorkshire Police, 2003)⁷

	Hyde Park and Woodhouse		Burley / Hyde Park SRB	Leeds Metropolitan District
	Total	Rate (per 000)	Rate (per 000)	Rate (per 000)
All crime	5290	237.9	170.2	181.91
Domestic burglary	899	100.2	104.0	47.77
Vehicle crime	1116	50.2	32.3	32.98

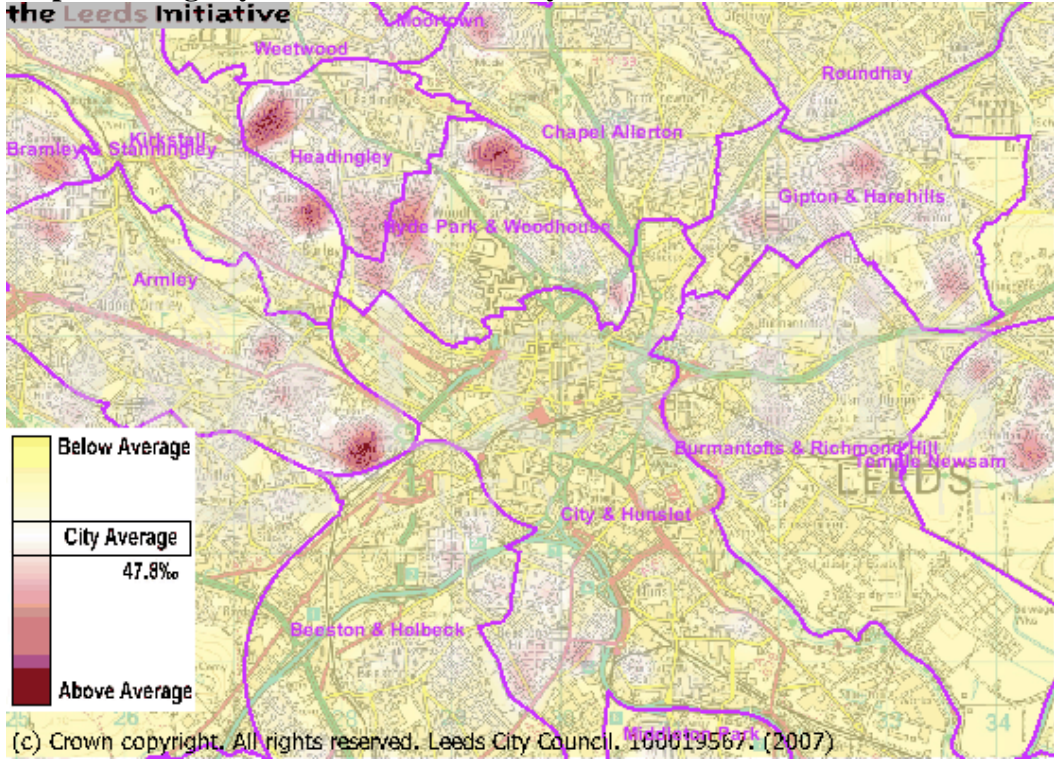
⁷ Crime rates calculated per thousand of population (2001 census), except domestic burglary which is per thousand households listed for Council Tax (Oct, 2003). Given the large numbers of households not listed to pay council tax, this may make the proportion higher than 'reality'. However, it should also be noted that many crimes, particularly against students, go unreported.

Criminal damage	898	40.4	30.8	34.0
-----------------	-----	------	------	------

Map 9i: Burglary rates (2003)



Map 9ii: Burglary rates across inner city and central Leeds (2003)



Conflicting views of community

“Hyde Park is an inner-city area of north-west Leeds, West Yorkshire, England, situated between Leeds University and Headingley. It is also the local name for Woodhouse moor which is a wooded moor between Woodhouse lane and Hyde Park road. The area is in the centre of the city's student community and has a laid-back, bohemian atmosphere. Being next to Headingley (a more expensive area) it has become a place for students to live who are looking for cheaper rent. Alongside the students it also has sizable South Asian and Afro-Caribbean communities. This has given the area a multi culture atmosphere with mosques and Asian shops catering for many kinds of delicacies and giving the area a local population so preventing studentification.

The area suffers considerable social deprivation including high unemployment, bad housing stock and one of the highest crime rates in the country, particularly for burglaries. In 1995 the area suffered serious rioting after the taking over of a local pub by the police to be used in surveillance”. (http://en.wikipedia.org/wiki/Hyde_Park%2C_Leeds)

The Wikipedia website entry for *Hyde Park (Leeds)* reveals two important concerns for residents in the area. One, explicitly dismissed by the anonymous contributor to the site, is that of studentification, defined crudely, as the turning over of a residential area to predominant use by university students⁸. The other, which is presented as an unfortunate point in the area past, is the ‘Hyde Park riots’ which resulted in the burning down of a local pub. While the area may have moved on from events in 1995, concerns about the possible ‘studentification’ of the area remain.

The threat (and fear) of ‘Studentification’

Map 10 shows the number of ‘empty properties’ in the field site. In its construction, the number of properties exempt from Council Tax is used as a proxy measure for housing conditions / capacity. The map thus actually illustrates the number of properties where Council Tax was not due. As student households are exempt from council tax payments, this map serves as a useful proxy for the number of student properties in the area. The dominance of the student population has already been commented on; and it is important not to become overly concerned with the student presence in a population that is home to a number of other socio-economic groups.

However, a number of residents in the Hyde Park sector of the field site, and particularly those adjacent to Headingley, have begun to voice concern at the pressures such a large, transient population has on the area. Describing the problem as an “epidemic” one local website for example provides help and advice to ailing residents; with advice ranging from how to complain about taxi horns sounding in the street to how to market properties exclusively to ‘local’ families (headingley.org.uk). The impact of a mobile, seasonal population in the north of the field site has been commented on with some rhetorical flourish;

⁸ See also Smith, D (2006): *‘Studentification’: a Guide to Opportunities , Challenges and Practice* (London) Universities UK.

“Headingley has always been a residential and family area, with students staying as seasonal guests during their studies. Recently, there has been a trend for long standing residents to leave, with regret... They are people who care for Headingley and who made their lives here. The area needs such people and they are sadly missed.

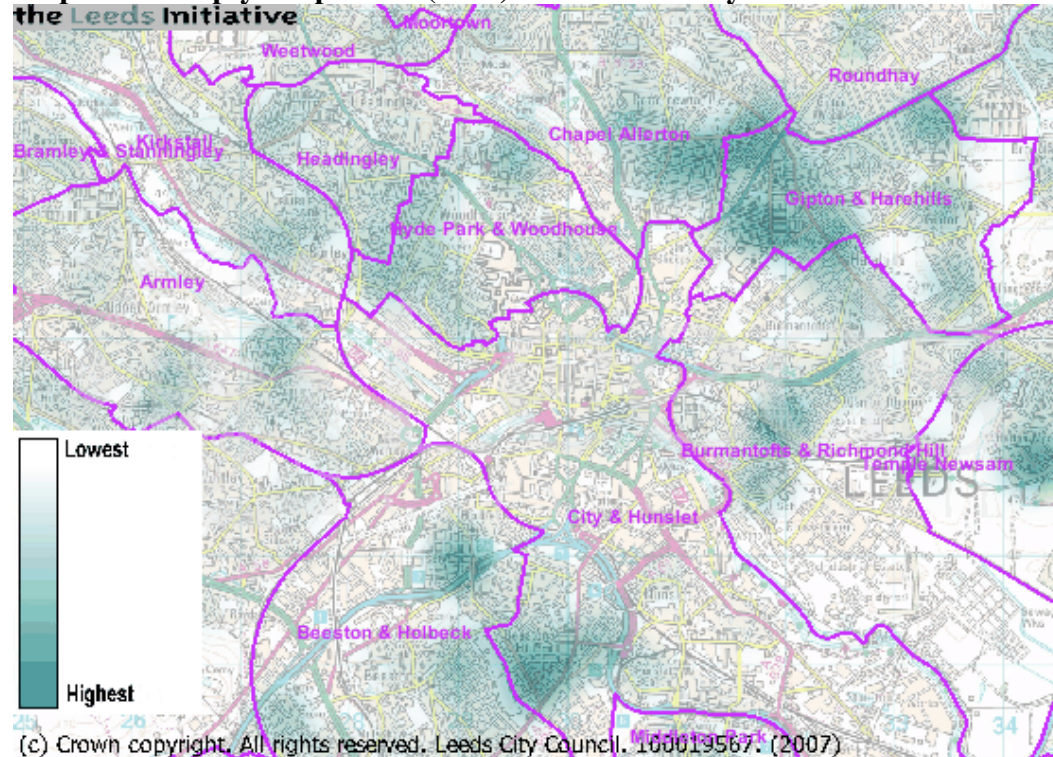
Why are they leaving? Because Headingley has begun to feel rough. Why? Because industries are taking over the area. The industries of Landlordism, Higher Education and the Breweries are exploiting community assets built up in Headingley over generations. In the process they are putting so little back that the area is becoming run down. The industries are leaving Headingley degraded and unattractive to both residents and students (and students' parents). The result is that students move on to more pleasant areas, still cared for by their residents. This process is taking place in university towns all round the UK...”

(<http://healheadingley.org.uk/main.htm>)

**Map 10i: ‘Empty Properties’ (2002):
the Leeds Initiative**



Map 10ii: ‘Empty Properties’ (2003) across inner city and central Leeds
the Leeds Initiative



The ‘Hyde Park disturbances’

‘Hyde Park Unity Day’ presents itself as a day of celebration for the local community. It emerged from the aftermath of the disturbances (generally referred to as ‘riots’) in 1995, which attracted intense national media coverage and this led to a negative portrayal of the area which we as a community had to come to terms with ourselves. Hyde Park Unity Day was initiated by the Hyde Park Residents Association with the mission to: “create a relaxed friendly and safe environment; unite the community and provide an opportunity to highlight the positive aspects of living, working, and studying in Hyde Park; demonstrate communities strength through voluntary involvement; celebrate cultural diversity through art, music and performance; create a focus point for community activities; unite and provide opportunities to showcase skills, talent and nature of local people and artists”.

The unity day initiative is just one of several local ‘community-based’ initiatives aimed at improving the local environment or providing support to local people. Such community activities are legion in neighbourhoods across Leeds and Hyde Park and Burley are no exception (Appendix 1).

Figure 1: Unity Day

Community spirit shines through as riot-hit residents put on a show of unity

Tony Earnshaw

WHAT A difference a year makes.

Just 13 months ago, the streets of Hyde Park in Leeds were littered with burned out cars after a 100-strong mob rampaged through the area, pelted police with stones and set fire to the Jolly Brewer pub, reducing it to a blackened shell.

That was July 1985. Now, as the summer of 1986 draws to a close, the community has bounced back to prove there is life after such horrendous scenes of rioting. Like a phoenix, Hyde Park has risen from the ashes and chaos of mob rule and violent disorder.

Unity Day, held on Saturday in the greenery of Woodhouse Moor, was the brainchild of the Hyde

Park Residents' Association and heralded as an example of what ordinary people could do to celebrate all that was good about the area in which they live.

And what an example. The 10-hour, fast-paced event exploded into life with steel bands, an 11's a Knockout competition, pony rides, skateboarding, live bands and DJs blasting out music.

The Leeds Children's Circus gave displays and, keeping an eye on the local football talent in the five-a-side competition, were scouts from Leeds United.

Organiser Chris Callender said the day had been a huge success.

"We have had a 25-strong team co-ordinating Unity Day, and none of us has done an event like

this before. We managed to get it underway on time and didn't go over budget. We're already looking at what we can do for Unity '87," he said.

"We had a great atmosphere and absolutely no trouble or hassle from anyone."

"It was a brilliant day. We could have done with more local people on the main stage but that's something we'll put right next year."

Mr Callender said more than 2,000 people visited the show throughout the day, proving that community-based events could be a success.

"We have shown that we can all work together in peace and harmony and we have got on really well. The message is that the community gets on," he added.



Flashback: Firefighters tackle flames at the Jolly Brewer pub after the arson attack. Picture: Bruce Greor.

(source: <http://www.unityday.freeserve.co.uk/media.htm>)

Conclusion

The data presented here indicates that there is more to Hyde Park and Burley than routine descriptions of 'studentification' or deprivation. And there is certainly more to the idea of community than the activities and opinions of voluntary groups or religious organisations, however well intentioned. This brief overview has revealed a heterogeneous population far removed from the mythologized romanticism of 'traditional inner city areas'. The statistics and maps presented here go some way to documenting this difference, but they do little to describe and explain how 'community' is perceived and practised in the area.

References and Data Sources

- The Leeds Initiative: *Census 2001: Leeds, The Big Picture*, HMSO / National Statistics. Available for download at:http://www.leeds.gov.uk/files/2005/week35/inter__2BCA2EC659245A8C80256E16003FED08_34c3c6bc-c5de-4cf3-8bbc-01e49a0f2a3b.pdf
- Leeds Statistics (accessed 20/04/2007):
http://www.leeds-statistics.org/Home_Page_files/Home_Page.html
- National Statistics (accessed, 01/03/2007)
<http://www.statistics.gov.uk/default.asp>
- National Statistics Neighbourhood site (last accessed 21/03/2007)
<http://neighbourhood.statistics.gov.uk>
- Leeds Northwest Primary Care Trust (now Leeds Primary Care Trust)
<http://www.leedspct.nhs.uk/archive/northwest/> (last accessed 01/03/2007)
and <http://www.leedspct.nhs.uk> (last accessed 21/03/2007)

Other websites consulted

- Heal Headingley (formerly, Headingley Against Landlordism)
<http://healheadingley.org.uk/main.htm>
- Hyde Park Unity
<http://www.unityday.freemove.co.uk/>
- Older Active People
<http://www.olderactivepeople.org.uk/index.htm>
- Burley Green community organisation
<http://www.burleygreen.com/wall/>

Appendix 1:
Community groups, networks and activities in Hyde Park and Burley
See also Map 11 below

Information collected from local consultations, internet and also Inner Northwest Area Committee (contact: Kate Baldwin)

1. Community / Resource Centres:

All Hallows Community church and café

Community cafe. Also number of projects including yoga and salsa. Offer advice sessions and Credit Union (now at Burley Lodge Centre).

Burley Lodge Centre, Burley Lodge Rd (currently undergoing refurbishment)

Offer one to one counselling service available to local people on a low income or unemployed. Support community initiatives through Opportunities for Volunteers scheme. Offer Youth and Community Education. Free generalist advice provided through four local open door surgeries. Offers various Children's activities, Youth work activities (for ages 13-19). A range of other activities are also available including knitting, cooking, health and relaxation activities and an adult and children's drama group. The centre is also widely used by other organisations and individuals to offer Arabic dancing, Eastern European dancing, Martial Arts, Yoga, arts activities for young people with learning disabilities, a church run group for boys and an IT course. Significant debt advice centre.

Cardigan Centre, Cardigan Rd

Works in North West Leeds to improve the quality of life for local people through using the centre for various activities including training, lunch clubs and play schemes.

Headingley Community Centre, Bennet Rd

Oblong

Oblong is a creative resource centre run by local people for community groups, artists, musicians and writers. The centre enables local people to produce work and develop their skills in arts, music, crafts and computing, and to use those skills constructively.

*As of 2007 Oblong moved from Westfield Rd (Burley) to Woodhouse.

St Mathias Church Centre, St Mathias St

Woodsley Road Multicultural Centre, Woodsley Rd

Swarthmore Education Centre

The Swarthmore Education Centre is an education provider, mostly for adult and community learning. They are also a resource for the local community and are involved in neighbourhood regeneration in the local area in partnership with other groups

2. Religious venues

Muslim (New) Makkah Mosque on Brudenell Road
Leeds Grand Mosque, Woodsley Road

Hindu Hindu Temple, 36 Alexandra Rd

Christian **Anglican Churches**
St Augustine, Hyde Park Terrace
St Matthias, Burley Road

Emmanuel, Woodhouse Lane
All Hallows, Regent Terrace
St Michael, St Michael's Road
Holy Trinity, Church Lane

Methodist Churches

Woodhouse, Woodhouse St
Burley, Cardigan Lane
Hyde Park, Woodsley Rd

Roman Catholic

Our Lady of Lourdes, Cardigan Rd
St Urban, Grove Road

Baptist

South Parade, South Parade

Lutheran

St Luke, 9 Alma Road
Quaker (Society of Friends)
Carlton Hill Meeting House, Woodhouse Lane

United Reformed

Headingley St Columba, Headingley Lane

Other Churches

Word of Life, Cardigan Road
City Church, Headingley Lane
Woodhouse Christian Fellowship, Holborn Approach
Leeds Chinese Christian Church, Woodsley Road
Vineyard, Foxcroft Close

3. Organisations based in Headingley, Hyde Park and Burley

Apna Day Centre

Brudenell Centre for Community Education

Shire View Centre for blind and partially sighted

Age Concern at Quaker Meeting House

Women's Institute

Hyde Park Source

Reclaims and re-uses hazardous and derelict spaces for the benefit of the community and the local environment. Work includes renovate binyards between houses, creating gardens and safe play areas for children.

Hyde Park Allotments

Rosebank Millennium Trust

The Rosebank Millennium Green Trust is a registered charity that was formed to create and maintain the Rosebank Millennium Green, a 5.5 acre green space in the Burley / Hyde Park area of Leeds. The Green is owned and managed by the local community and therefore relies on the work of volunteers to maintain and improve it. Volunteer opportunities include gardening, conservation, arts, fundraising, web design and working with local people from all sections of the community.

Friends of Woodhouse Moor

Little Woodhouse Community Association

Little Woodhouse Community Identity project

South Headingley Community Association

Seagulls (paint recycling)

Mothers Against Violence (now based at Oblong, Woodhouse)

Hyde Park Unity (organises Hyde Park Unity Day)

Hyde Park Unity Day is run by volunteers and is an organisation that tries to develop creative talents in Hyde Park and surrounding area by providing showcase events with which to display this talent. This is usually Hyde Park Unity Day but they also hold a pantomime every year. They also undertake a small amount of art/craft workshops that lead up to the events.

Swarthmore Education Centre

Oblong (now at Woodhouse)

Neighbourhoods for All (intergenerational work in Leeds)

The Scarman Trust and Can Do community development (based at Harehills; sponsor community development in area)

Leeds Voice

HMO Lobby (Housing in Multiple Occupancy)

The lobby is an association of some twenty community associations in NW Leeds, campaigning nationally and locally for action on concentrations of houses in multiple occupation in Leeds, especially in this area and especially as a result of the demand for student housing.

Headingley Development Trust

Organisation made up of local residents and small businesses with the aim of promoting and developing a sustainable community in Headingley.

Burley and Hyde Park Community Safety Project

Providing a community safety programme for the people of Burley and Hyde Park based on the action plan prepared by local people.

*reformed under 'BCoSS (Burley community safety scheme) in 2007

Canopy Housing Project

Works with young homeless people aged 16-25 in Hyde Park and Burley.

Canopy helps young people renovate empty properties and provides a support package to help tenants settle into their new homes.

4. Children's groups

South Headingley Toy Library.

St Michael's toddler's group

Wrangthorne Toddler's Group

Mother's and toddlers, South Parade Baptist Church

Burley Toy Library

St Matthias Toddler Group: for pre-schoolers and their parents

5. Young people's voluntary services

Youth Point: information service

Information and support service for young people aged 13-19 years who live in North West Leeds. Based at The Cardigan Centre

Connexions access point

Leeds Faith in Schools

Burley Lodge (Counselling services)

6. Older people's voluntary services

Older Active People

Voluntary sector organisation that works with older people in the Burley, Hyde Park, South Headingley, central Headingley, Kirkstall and Little

Woodhouse areas. The work includes intergenerational projects, lunch clubs, assisted shopping, befriending, Bollywood screenings, fall reduction exercise classes, walking and theatre groups.

Age Concern

Cardigan Community Action (works to improve the quality of life of local older people)

Leeds Kashmiri Elders

Tuesdays, Thursdays and Sundays 11.30am - 12.30pm Woodsley Road Centre

Leeds Older People's Forum

Caring together in Woodhouse and Little London

Caring Together is a small registered charity working with 400 older people living in their own homes in Woodhouse and Little London. They offer a range of services and activities including befriending, decorating, gardening, benefits advice, group activities, healthy living groups, day trips, parties, help with DIY, security systems, bedding and energy efficient light bulbs.

7. Health groups

Active for life

Active 4 Life is a healthy living project working with people in the community. The project is for all ages and cultures. It organises a whole range of activities from indoor carpet bowls to play activities for children, chair-based aerobics and walking groups. They also have an allotment.

Burley and Hyde Park food co-op

Purchases bulk quantities of healthy organic, mainly vegan food from wholesalers to sell on at a cost price. Based at Oblong, open Thursdays 6-8pm.
*Since Oblong moved to Woodhouse, I am not sure if this still runs

Art Link (West Yorks)

Creative arts project for socially excluded groups working mainly with learning and physically disabled clients, people with mental health difficulties and older people.

8. University voluntary groups

CALM (Community Action at Leeds Met)

Leeds University Action

9. Local networks (information sharing)

Headingley Network

A community group dedicated to preventing the decline of central Headingley and improving the environment and facilities for those who live and work in the area.

Burley Network

Sub groups include Learning, Health, Young People and Greenspaces. The aim is to share information in Inner North West Leeds, enable groups and agencies to work closely together on joint initiatives and to plan work without duplication. Boundaries now extended to include Burley, Hyde Park, Woodhouse and Little London.

See also sub-groups:

Burley Learning Network

Burley Green Spaces Network

Burley Health Network

10. Residents groups and forums

Little Woodhouse Community Group (contact Freda Matthews)

Boundaries are Clarendon Road, Moorland Road, Hyde Park Road, Burley Road and Park Lane. Moorlands Residents, Willows Residents and Marlborough Residents are independent groups but affiliated to Little Woodhouse Community Association.

Also see:

Woodhouse Tenants Association

North Hyde Park Neighbourhood Association

*(disbanded as of 2006, reformed early 2007)

Moorlands Residents Association

South Headingley Residents Association

The Willows Residents Association

*(disbanded as of 2006, potential to reform in 2007?)

The Cardigan Triangle Community Association

HeAL (Headingley Against landlordism)

“A local organisation fighting to protect Headingley from the effects of uncontrolled landlordism. It is campaigning on behalf of year-round residents and students to recreate the balance in our community and HeAL the scars caused by landlordism. We are lobbying the Council, Universities and Central Government to make changes to protect our community”.

Woodhouse and Hyde Park forum

Headingley forum

Kirkstall forum

Little Woodhouse forum

All chaired by ward councillors and LCC area management. Address issues related to wards including planning applications. Invite local council officers, police and others.

Please send errors, omissions or additional information to:

a.j.clark@leeds.ac.uk

or

Andrew Clark

Leeds Social Sciences Institute

Beechgrove House

University of Leeds

Leeds

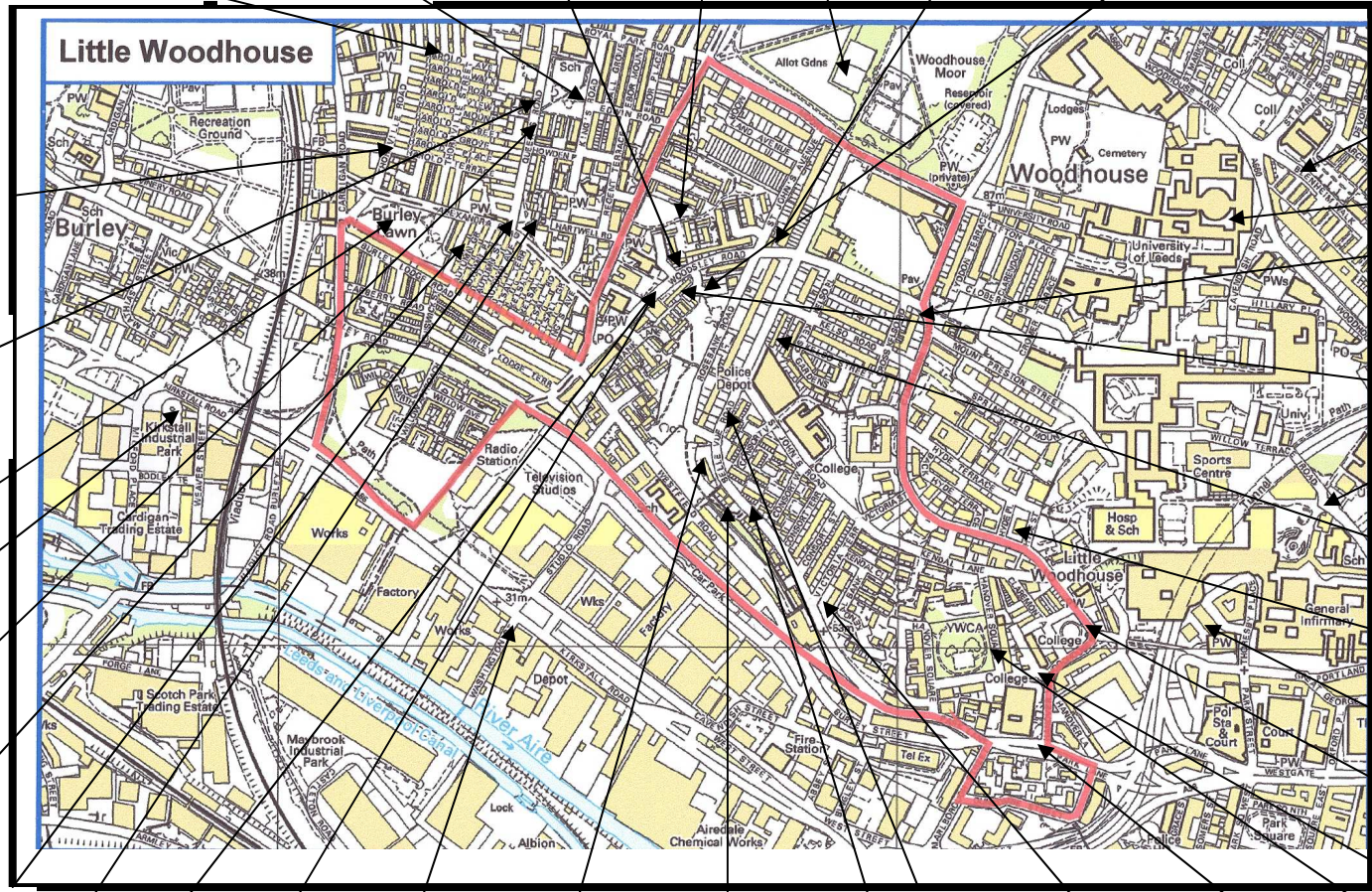
LS2 9JT

Location of some main community organisations, service providers and green spaces (text in red = uncertain location)

St Michaels College

- Makkah Mosque
- Royal Park?
- Hyde Park Health Centre
- Benson Court
- Woodhouse Moor
- Hyde Park Source
- Woodsley Multicultural Centre; Kashmiri elders association

Leeds & Moortown Furniture Store



Cardigan Centre; Older Active People; Connexions Youth

Leeds Student Medical Practice
University of Leeds
Samaritans

All Hallows church and community cafe

Leeds Grand Mosque
Leeds Metropolitan University

Poverty Aid UK

Bellevue Community Support Officers

Burley Medical Centre

Mosque on Brudenell terrace

Greater World Spiritualist Church
St George's Church & Crypt

Alexandra Park

Swarthmore Centre

Burley Lodge Centre

Park Lane College

Hindu Temple

Hyde Park Methodist Church

Seagulls

Rosebank Millennium Green

Sikh Temple

Art link

Leeds Federated Housing

Hanover Square mosque

Leeds Chinese Christian Church

Marlborough community centre

Appendix 2

Dan Vickers' Output Area Classification (OAC)

See <http://www.casa.ucl.ac.uk/googlemaps/OAC-super-EngScotWales.html>

Do not reference this data unless directly attributing to Dan Vickers
See: http://www.shef.ac.uk/geography/staff/vickers_dan/index.html

Changing Residential Patterns of the UK 1991-2001 (ESRC's UPTAP Programme)

Area classifications are a way of simplifying complex datasets into a manageable set of indicators. They have powerful predictive powers that can be used to explain any number of demographic trends and socio-economic processes (Harris et al., 2005; Sleight, 2004). My PhD (in collaboration with the ONS) has created a classification of the UK at a very fine geography (census output areas) using data from the 2001 Census.

The classification splits the UK into a hierarchy of 7, 21 and 52 groups, clustering areas that share similar socio-economic characteristics. By mapping the classification using digitized output area boundaries and Ordnance Survey background mapping, clear residential patterns can be seen throughout the UK. Clear distinctions can be made between neighbourhoods, for example on the basis of affluence, rurality or multiculturalism. The classification can answer many questions about the residential patterns of the UK at the start of the 21st century. However, the classification cannot tell us how, if at all, these residential patterns have changed over time and how these changes are affecting current socio-economic processes and demographic trends. To find out if, and how, residential patterns have changed a means of comparison needs to be created from an earlier data source.

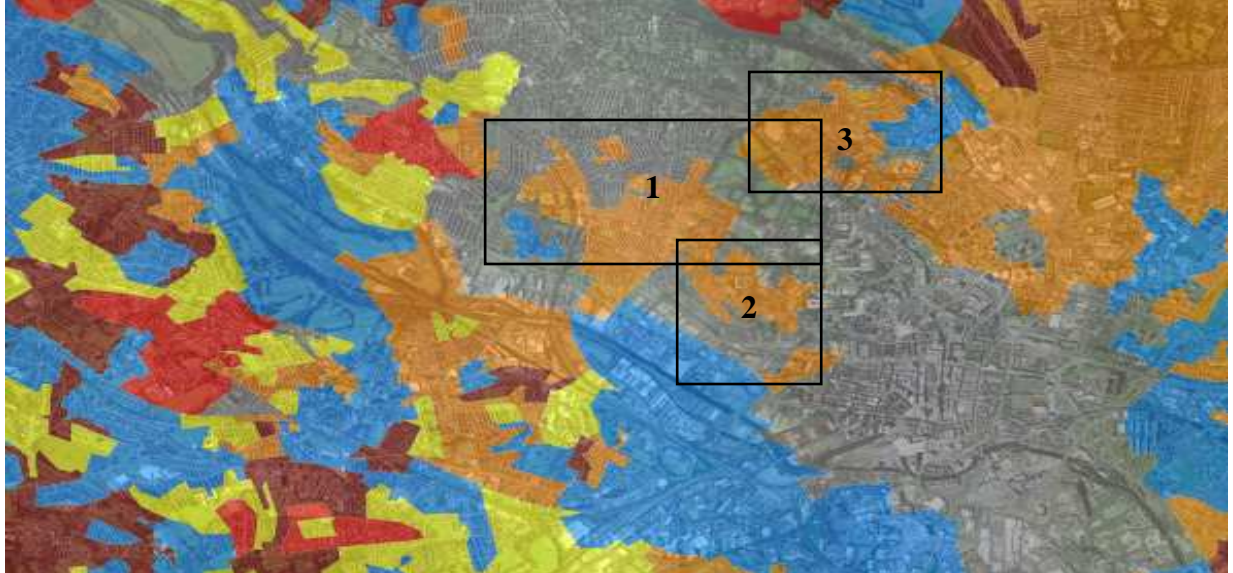
Therefore a comparable classification will be created at the finest geography (enumeration districts) using data from the 1991 Census. The classification will be created using the same 41 variables used to create the Output Area Classification from the 2001 Census, where available. A similar number of groups to the Output Area Classification will also be aimed for in order to make the two systems as comparable as possible. When the classification of the 1991 enumeration districts is complete it will be mapped in the same way as the Output Area Classification and the residential patterns will be examined. The two classifications can be overlain with the use of GIS techniques and the patterns displayed by the two classifications can be systematically compared. It will then be possible to assess if there have been any significant changes in the residential patterns of the UK between 1991 and 2001. The effect of processes and issues such as socio-economic inequalities, multiculturalism and gentrification on these residential patterns will also be highlighted

Classifying Leeds

Map 12 (below) is a reproduction of Dan's classification for North West Leeds. The approximate location of the field site is squared off. Box 1 shows the approximate location of Hyde Park and the Burley Lodges, Box 2 shows the approximate location of Little Woodhouse and the Marlborough estate. Box 3 shows the approximate location of Woodhouse.

Map 13 shows the Hyde Park and Burley area in more detail. Box 5 shows the approximate location of the Willows housing estate.

Map 12 Dan Vickers' classification for North West Leeds (see text for explanation)



Map 13: Dan Vickers' classification for Hyde Park and Burley



Key for Maps 12 and 13